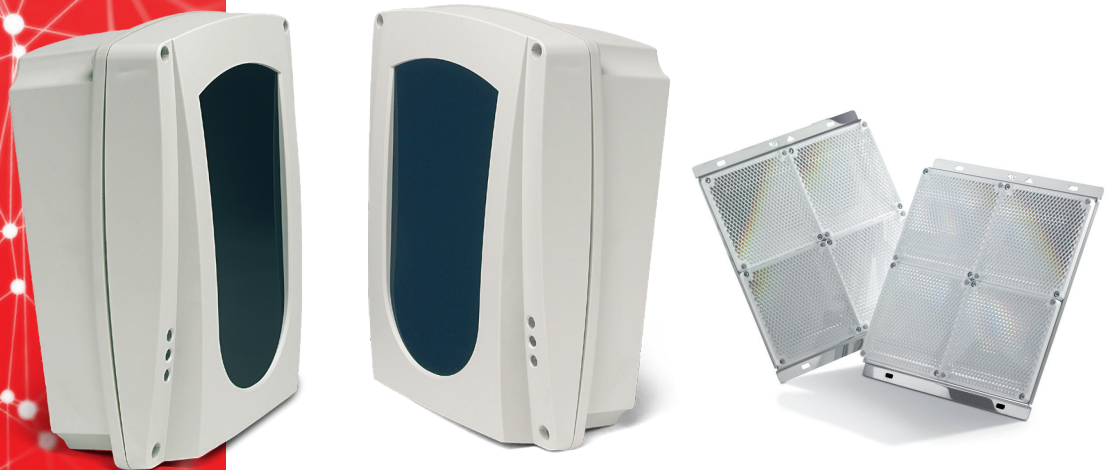


**BF**SERIES

**Control your environment**  
with the new beam smoke detectors

MADE IN ITALY



# BF100A



## ACTIVE IR BEAM SMOKE DETECTOR

Range from 5 up to 100 metres.

Smoke detection system made of an Emitter and Receiver which can detect and determine the quantity of smoke in the protected area.

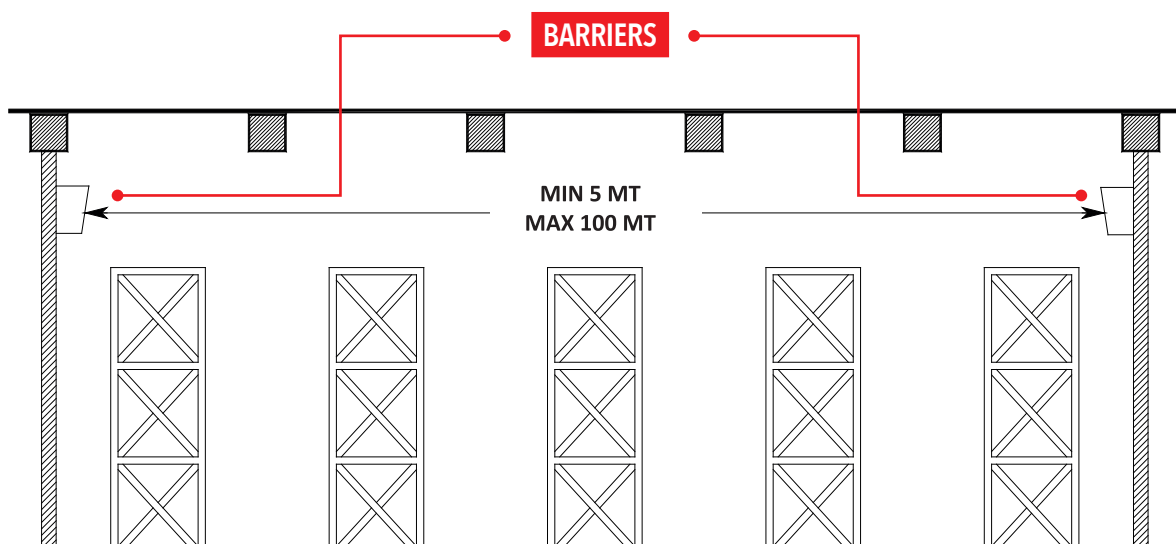
### Characteristics

- › The barrier is equipped with an internal device (2-display module) for **calibration and checking of the received signal in real time**.
- › The boards are equipped with an **optical viewfinder** placed on one side that allows a rough alignment.
- › **Adjustable sensitivity** with a DIP switch to get a **better intervention threshold** according to the working distance.
- › The barrier is equipped with alarm, fault and consumption outputs, which allow it to be connected to **standard fire control panels**.
- › The barrier has a serial interface to **connect up to 16 units to BRC keypads**.
- › Dimensions: (DxLxH): 96 x 159 x 211 mm
- › **CPR certification** in accordance with **EN54-12:2015**

### Approval

- › **EN54-12:2015**

### BF100 application example



# BF SERIES

## REFLECTING IR BEAM SMOKE DETECTOR

Range from 5 up to 120 metres.

Smoke detection system made of an Emitter/Receiver group. Thanks to a reflecting panel, it can detect and determine the quantity of smoke in the protected area.



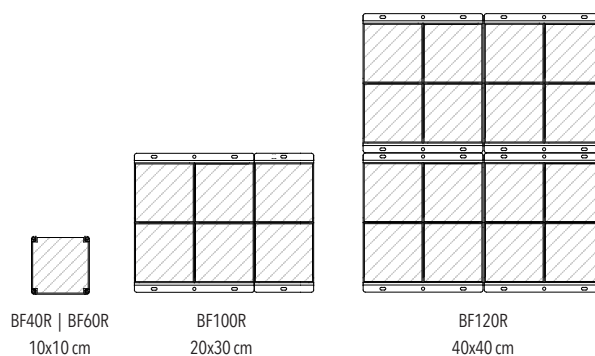
Full product range with ranges from 5 to 120 metres.

### Characteristics

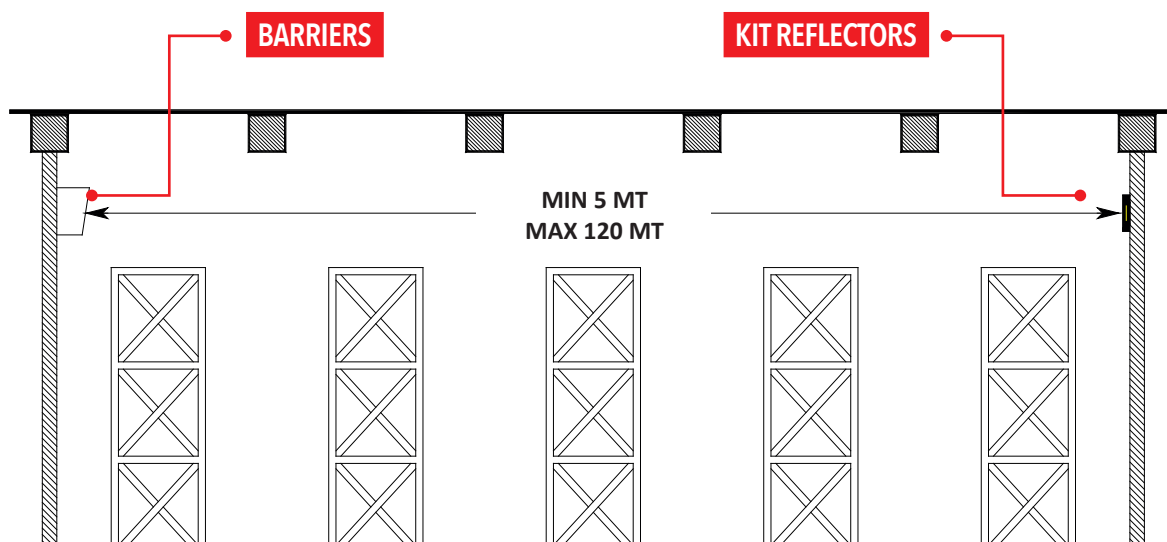
- > The barrier is equipped with an internal device (2-display module) for **calibration and checking of the received signal in real time**.
- > The boards are equipped with an **optical viewfinder** placed on one side that allows a rough alignment.
- > The board performs a **self-calibration every 24 hours** from the time of first delivery to compensate for any masking caused by dust on the lenses and reflectors.
- > **Adjustable sensitivity** with a DIP switch to get a **better intervention threshold** according to the working distance.
- > The barrier is equipped with alarm, fault and consumption outputs, which allow it to be connected to **standard fire control panels**.
- > The barrier has a serial interface to **connect up to 16 units to BRC keypads**.
- > Selection of models (40-60-100-120) according to the working distance.
- > Dimensions (DxLxH): 96 x 159 x 211 mm.
- > **CPR certification in accordance with EN54-12:2015.**

### Approval

- > **EN54-12:2015**



### BF SERIES application example



## Reliability and performance with the new certified IR beam smoke detector



| TECHNICAL DATA        | BF100A                      | BFSERIES                     |
|-----------------------|-----------------------------|------------------------------|
| Range                 | From 5 to 100 m             | From 5 to 120 m              |
| Power supply          | From 11,5 a 27,8 Volt       | From 11,5 to 27,8 Volt       |
| Max Consumption       | 30 mA                       | 30 mA                        |
| Operating Temperature | From -25°C to +55°C         | From -25°C to +55°C          |
| IP degree             | IP64                        | IP64                         |
| Accessories           | BRC, BF TEST, BTM, XFIRE BF | BRC, BF TEST, BTM, XFIRE BF  |
| Models                | BF100A                      | BF40R, BF60R, BF100R, BF120R |
| Fiche                 | TX e RX                     | TX/RX + Reflector            |
| Dimensions (DxLxH):   | 96x159x211 mm               | 96x159x211 mm                |
| Weight                | 1.500 g                     | 1.500 g                      |

### ACCESSORIES



**BTM**

Plug-in module for visualization and management of barrier data via Bluetooth App.



**BRC**

Remote monitoring panel for displaying the status of BF barriers. Connectable via RS485 serial port, the panel can monitor up to 16 barriers.



**XFIRE BF**

Plug-in module to loop the barrier.

| Code    | Products | Description                                     |
|---------|----------|---|
| 4442103 | BF100A   | OPTICAL BEAM TX/RX                              |
| 4442104 | BF40R    | REFLECTION BEAM 40 m                            |
| 4442105 | BF60R    | REFLECTION BEAM 60 m                            |
| 4442106 | BF100R   | REFLECTION BEAM 100 m                           |
| 4442107 | BF120R   | REFLECTION BEAM 120 m                           |
| 4403200 | BRC      | REMOTE CONTROL BF*                              |
| 4405144 | BTM      | BLUETOOTH MODULE*                               |
| 4437110 | XFIRE BF | BF CALIBRATION KIT                              |
| 4444001 | BF TEST  | TEST FILTER                                     |
|         | APP BF   | BF CONFIG. & SUPERVISION APP Bluetooth version* |

\* Available from June 2024